



# Cash Wrap Equipment Set Up



Follow this step by step guide on how to set up the cash wrap equipment for your store.



Each cash wrap is different so not everything in this guide may apply to your cash wrap.



If you have any questions while setting up the cash wrap, please reach out to IT so we can assist in making sure the equipment is properly set up.

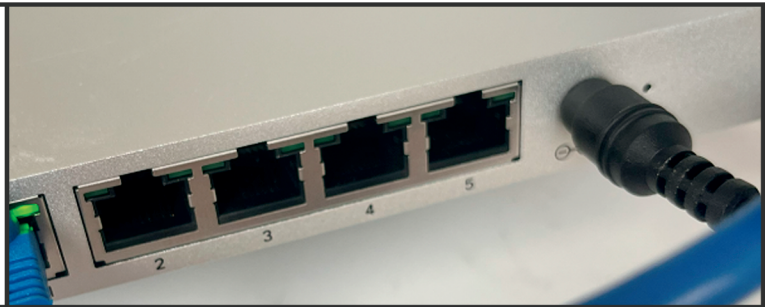
- 1 Start by installing surge protectors. Install one under the Manager station area and each register at the cash wrap. **Plug** the surge protector into the wall outlet and **press** the button on top. The surge protector is ready when you see the **blue light**.



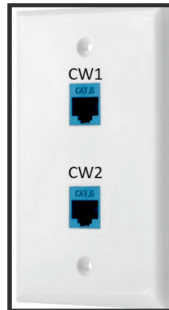
**BUTTON**

**BLUE LIGHT INDICATOR**

- 2 In the back room, **find** two ethernet cables labeled CW1 and CW2. **Plug** both cables into the router (silver cisco box) in any open port 2-5.



- 3 At the cash wrap, **find** the biscuit jack with the labels CW1 and CW2 above the ports.



- 4 **Run** an ethernet cable from the biscuit jack to our cash wrap switch. There are multiple styles of switch we use but you should have one of these three.



**NETGEAR**



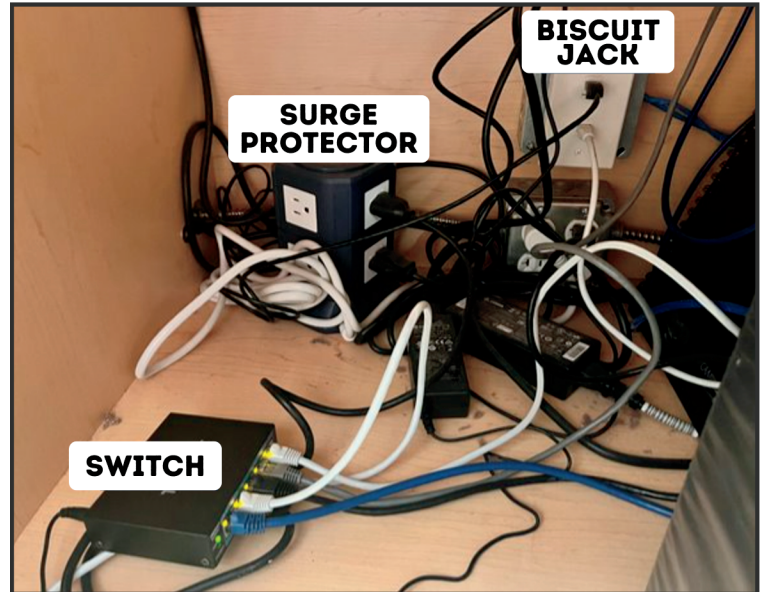
**TP LINK**



**TRENDNET**

**5** **Set up** the switch under the middle most register in the store. The switch will be important as it will provide internet to our registers.

- Example of a cubby with a switch installed. >>



**6** Next, **set up** the register that is directly above the switch. **Locate** the boxes with the stand for the iPad and receipt printer.



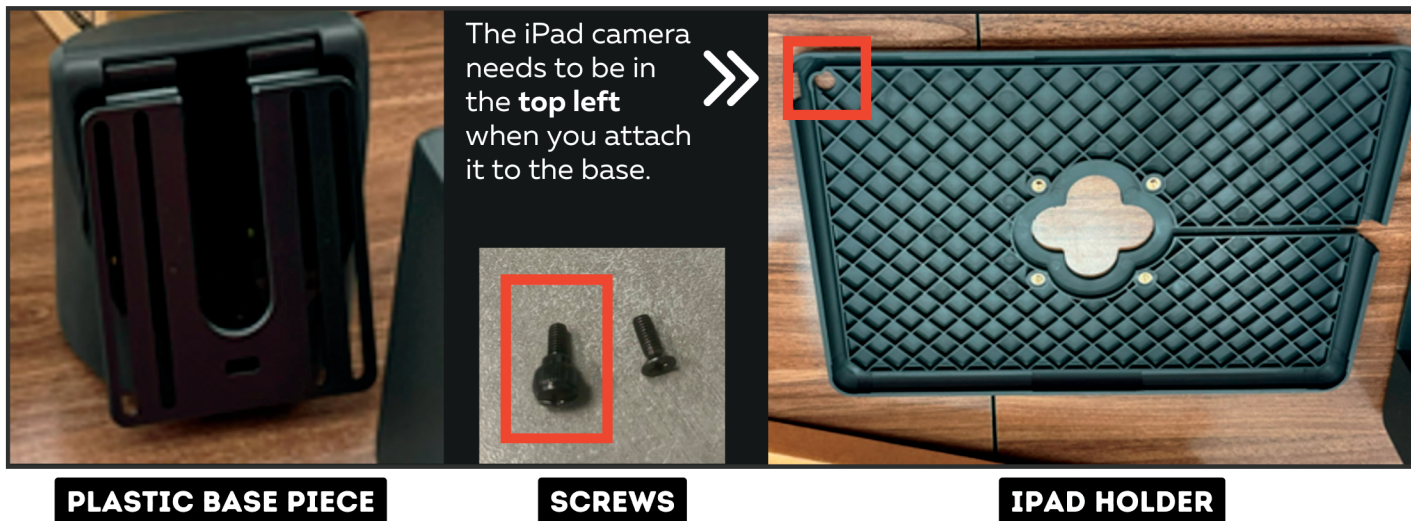
**7** **Unbox** the larger box first.  
• Inside the boxes are the screws and tiny screwdriver you need to assemble the stand.



**8** **Unbox** the iPad holder (small rectangular box).



**9** Attach the iPad holder to the plastic base piece using the **large** screws that came with the iPad holder.

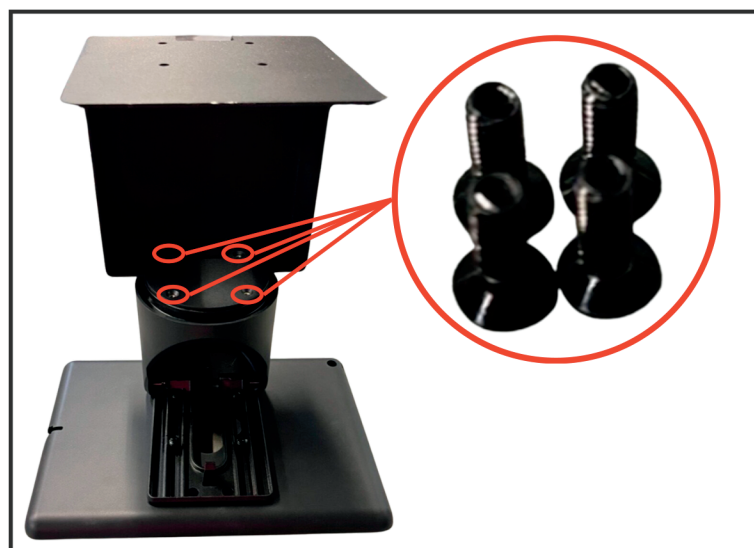


**TIPS** When assembled to the base, the iPad holder should look like the below photos.



**10** Attach the assembled iPad holder to the stand using the four **small** screws that come with the stand.

**TIPS** Flip iPad stand over to assemble base.

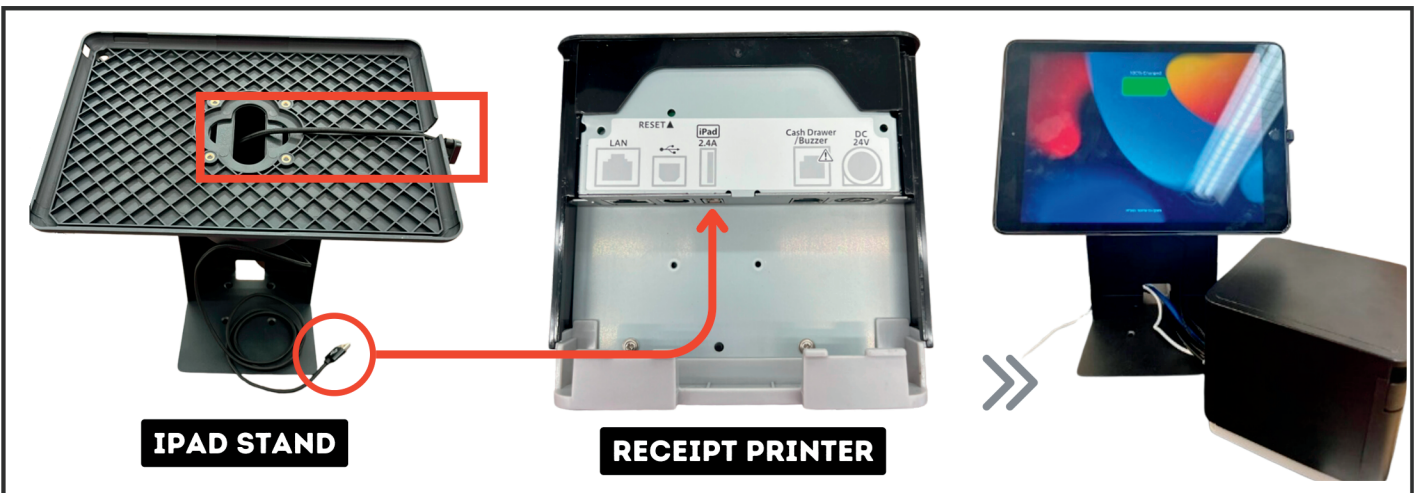


- 11** **Attach** the sticky pad (yellow on one side and white on the other) to the bottom of the stand. Do **not** adhere to the counter yet.

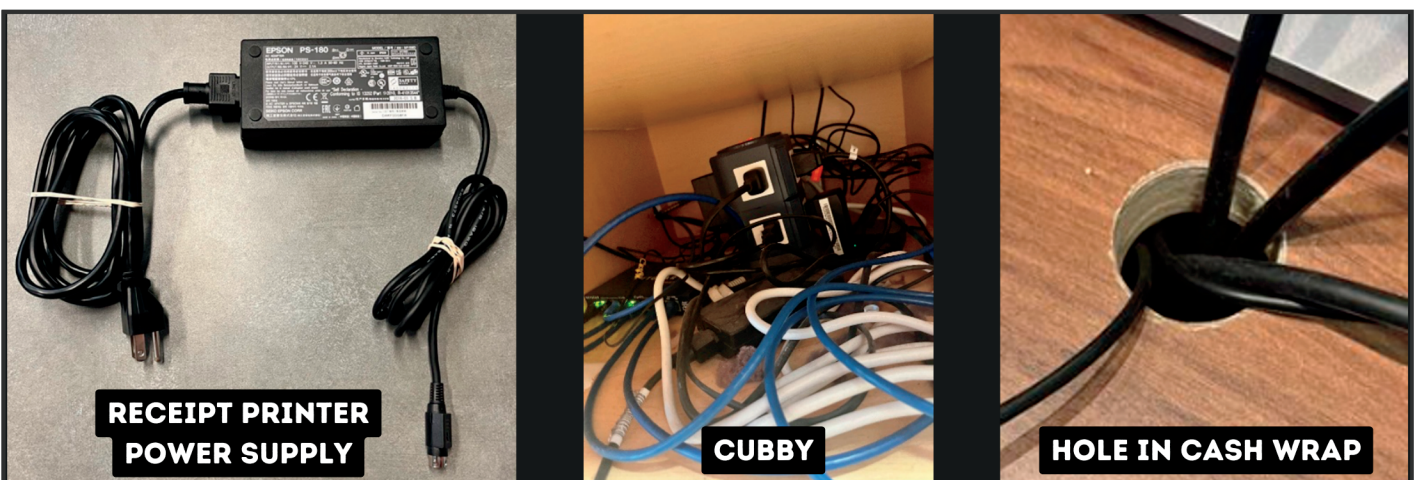


- 12** **Repeat** this process for **each register**.

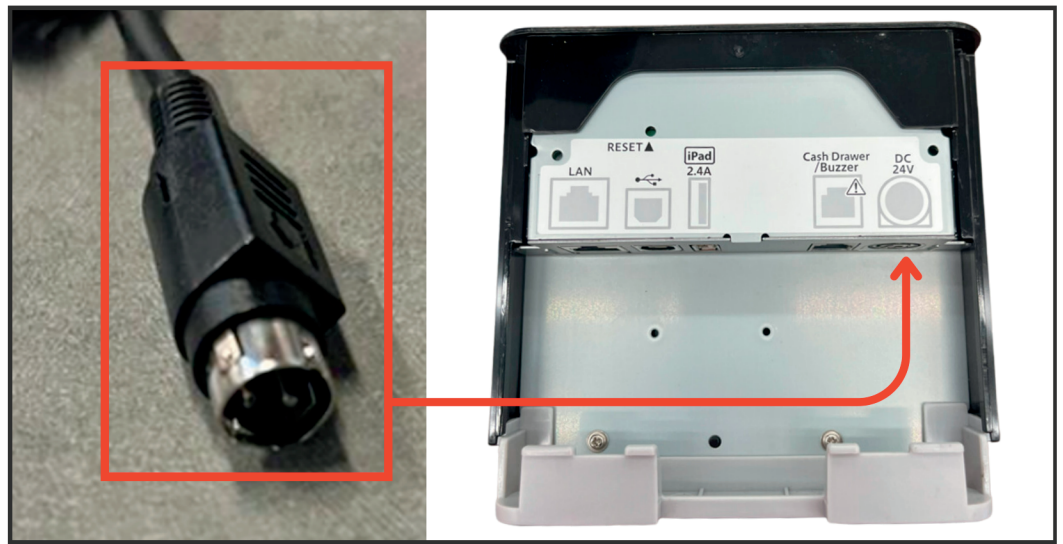
- 13** **Run** the iPad charging cable like the photo below. **Plug** the iPad charging cable into the iPad and then into the receipt printer where it says iPad.



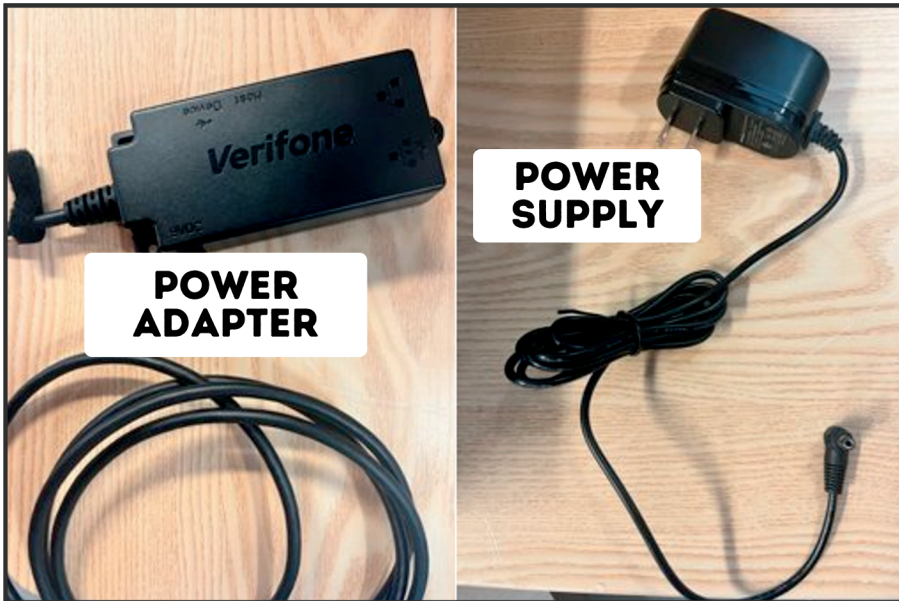
- 14** **Plug** the receipt printer power supply into the surge protector. **Run** the power supply from the cubby to the top of the cash wrap going **BEHIND** any shelves or drawers and exiting through the pre-drilled holes.



**15** Plug the power supply for the receipt printer into the back of the receipt printer. >>




**16** Next, **set up** the chip reader. **Run** the cable from the power adapter up to the top of the cash wrap. **Plug** the power supply into the surge protector on one end and then into the power adapter on the other. >>




**TIPS** When you plug the power supply into the power adapter, **insert** in the small round plug at the 12 o'clock position. **Rotate** it to the 9 o'clock position. >>




- 17 On the power adapter for the chip reader there are two ethernet ports available.
- **Plug** the first cable into the port pictured below. Next, **run** the ethernet cable to your switch you installed earlier and **plug** it into any of the open ports. 

**TIPS** Your cash wrap should have 2 inch holes at the back right and left of the cubbies to make it easy and neat to run the cables for your registers.



- 18 You should see **link lights** on the power adapter which ensures that internet service is being sent to the power adapter.
- There should be one solid green light and one flashing orange light. 



- 19 **Plug** the chip reader into the power adapter (you should have already ran the power adapter cable to the top of the cash wrap).
- On the back of the chip reader take off the plate, plug the cable in, and then place the plate back. There is a screw on the plate you can screw tight once you've plugged the cable in. 



- 20** The chip reader will take a few minutes to boot up.
- Once it is fully powered on, **confirm** that you see the arrow symbol in the top left corner (this will confirm that the chip reader has an IP address).



- 21** Run an ethernet cable from the second ethernet port on the chip reader power adapter to the receipt printer port labeled **LAN**.



- 22** **Confirm** that you see two lights, one blue and one green, on the front of the printer.





The power light on the left is blue (if it is red, that means you need to put receipt paper in the printer).




23

Follow the instructions to **find** the IP address for the receipt printer:

- A** Power off the printer.
- B** With the printer turned off, **hold** the feed button on the printer.  
- C** Keep holding the feed button and **power** the printer back on.
- D** Keep holding the feed button until a report **prints**. Then let go of the feed button.
- E** The printed report has 3 sections:
  1. General information
  2. Bluetooth configuration
  3. Network configuration


- F** You will **find** the **IP address** at the bottom of the Network Configuration section.
  - You will need this to set up the printer in Sitoo.

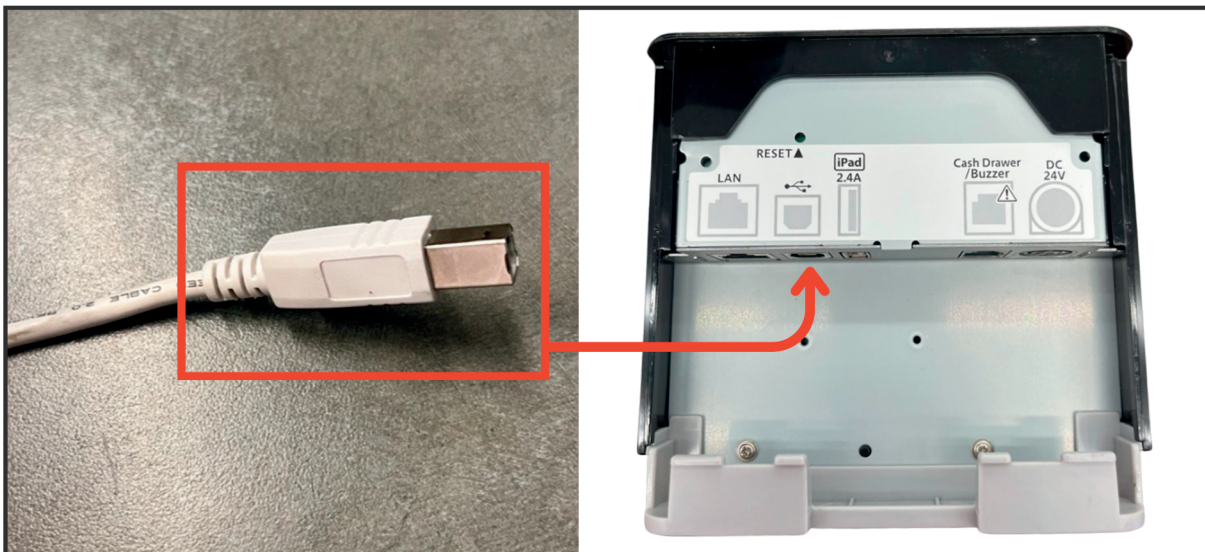


24 Find the backup cable for the receipt printer. 

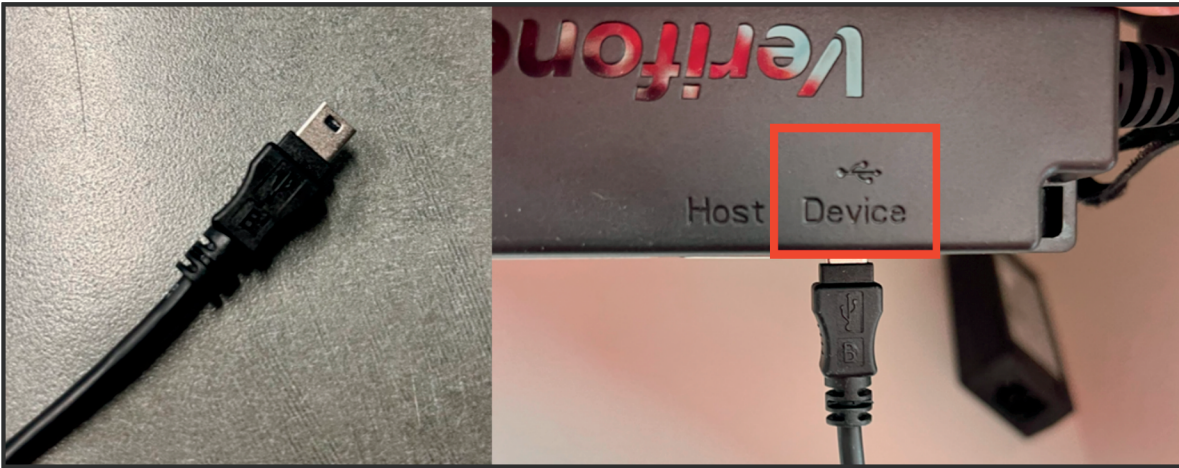
**TIPS** This is technically an adapter and a USB cable but they should be put together already for you.



25 Plug the square end of the USB cable into the back of the receipt printer. 

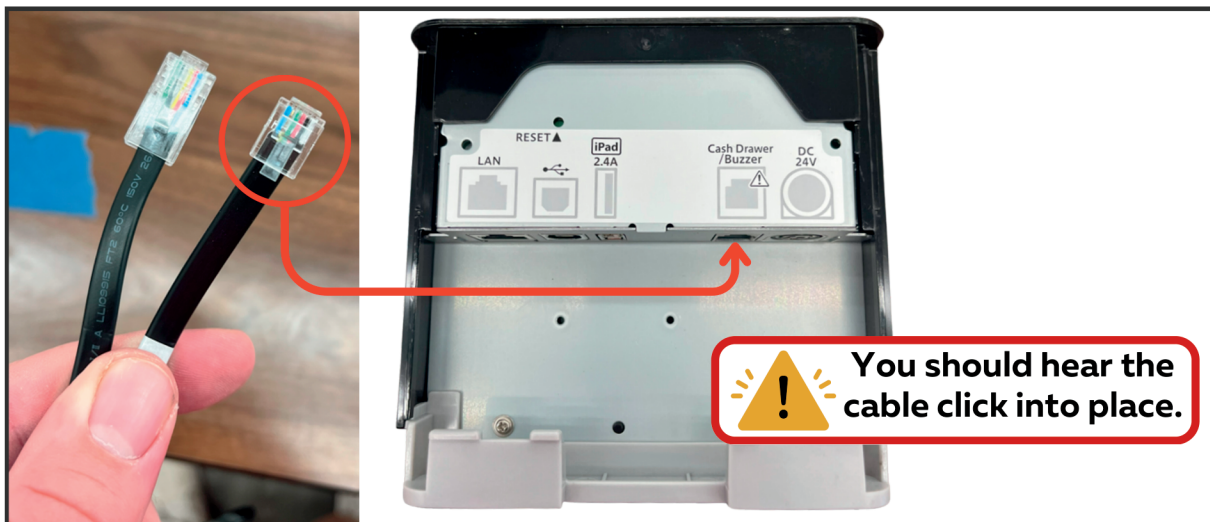


- 26** Plug the other end of the backup cable into the power adapter for the chip reader where it is labeled *Device*.

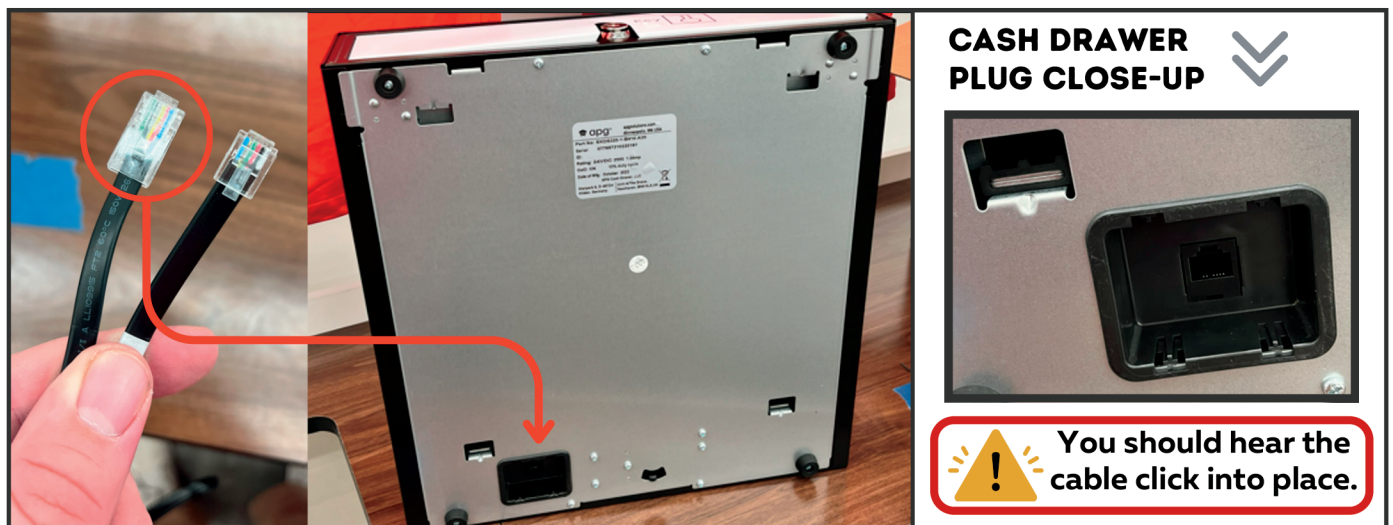


- 27** Locate the cash drawer cable, which should have come in the same box as the cash drawer itself and has one end that is bigger than the other.

- A** Plug the **smaller** end into the back of the receipt printer labeled Cash Drawer.



- B** Plug the **larger** end of the cable into the bottom of the cash drawer.



**28** Place the cash drawer in the top cubby.

**29** The back of your receipt printer should now resemble the below photo. You **do not need** the cover for the back of the receipt printer and it can be thrown out.


**Cables from left to right are:**

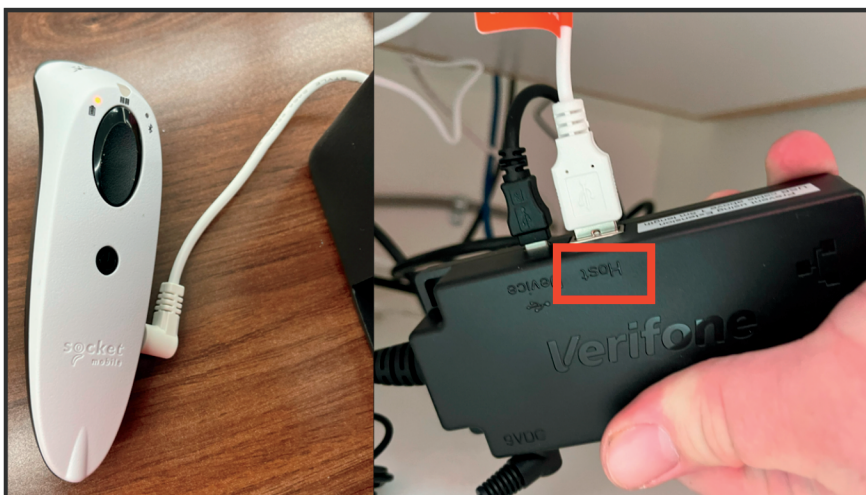
1. Ethernet cable
2. Backup cable
3. iPad charging cable
4. Cash drawer cable
5. Power cable



**30** **A** Locate the socket scanner. 



**B** Plug the small end into the right side of the scanner. Run the large end down to the cubby and plug into the chip readers power adapter in the port labeled *Host*. 

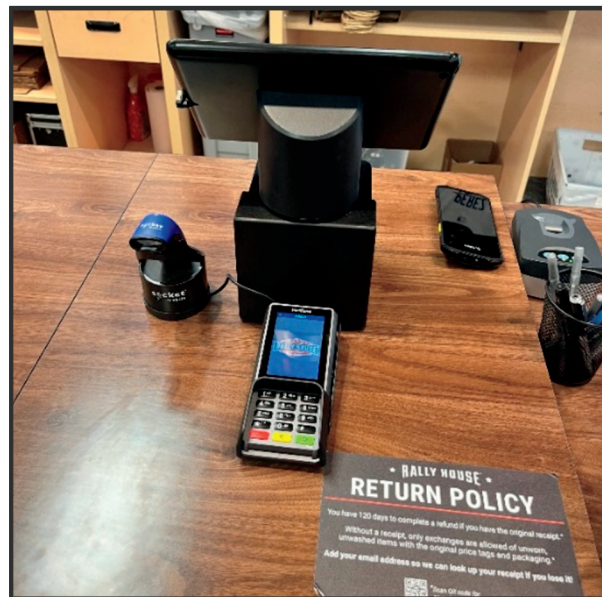


**31** Finalize the placement of the stand.

**A** Peel off the paper on the sticky pad on the bottom of the stand and place it over the hole in the cash wrap as seen below. ⇓



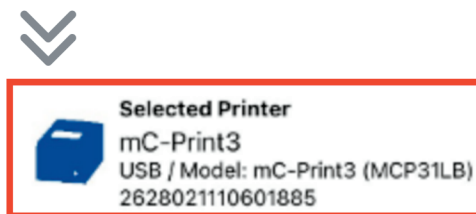
**B** Place the chip reader and scanner as close to the hole as possible. ⇓



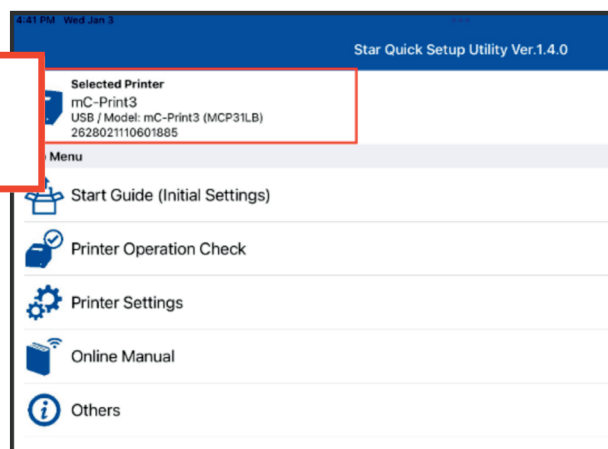
**32** On the iPad, tap to open the StarQuickSetup App. ⇓



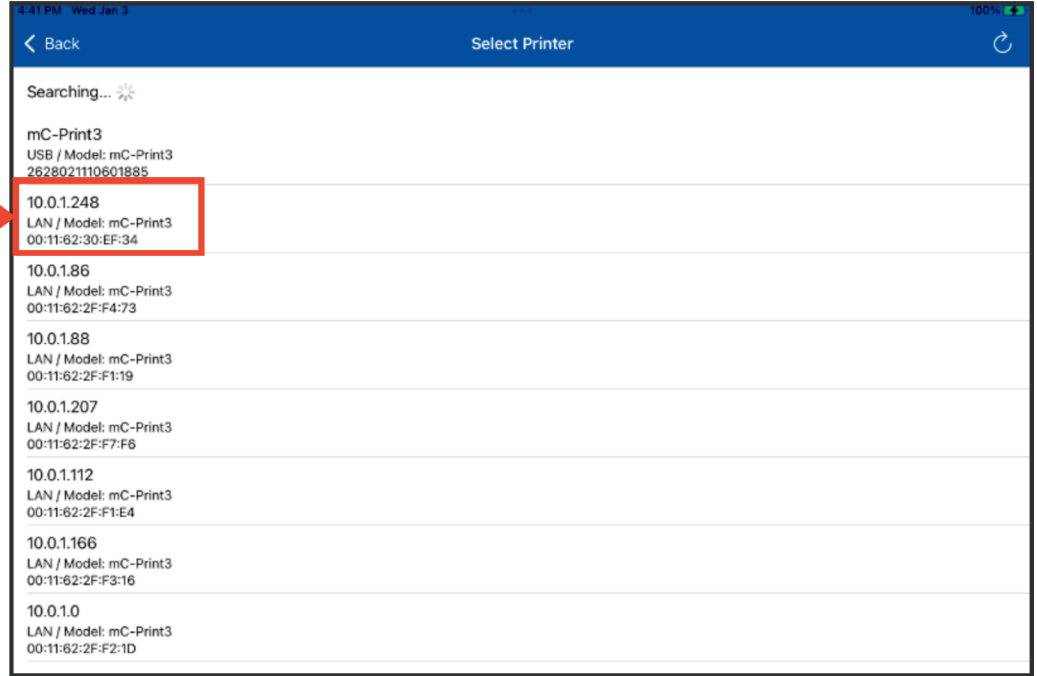
**33** Inside the app click in the top left corner to select a printer. ⇓



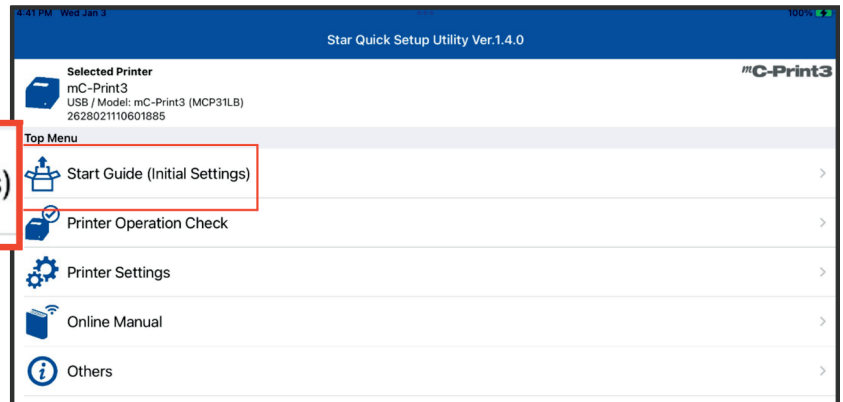
**TIPS** If your iPad appears different than this, click where it says *Selected Printer*.



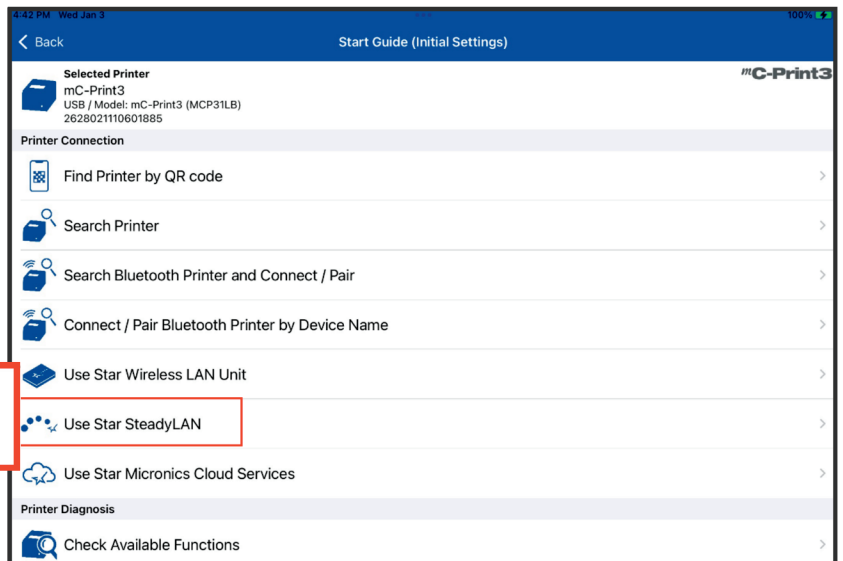
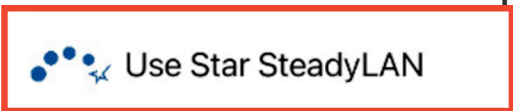
**34** Match the IP address from the printed report in Step 23, and **select** this IP address on the iPad.



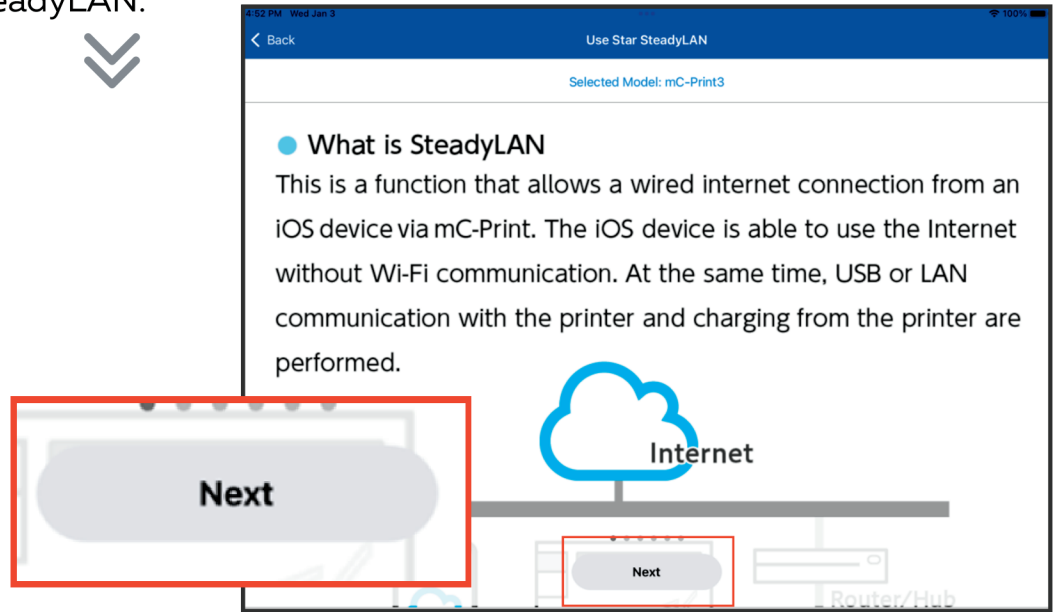
**35** Select Start Guide (Initial Settings).



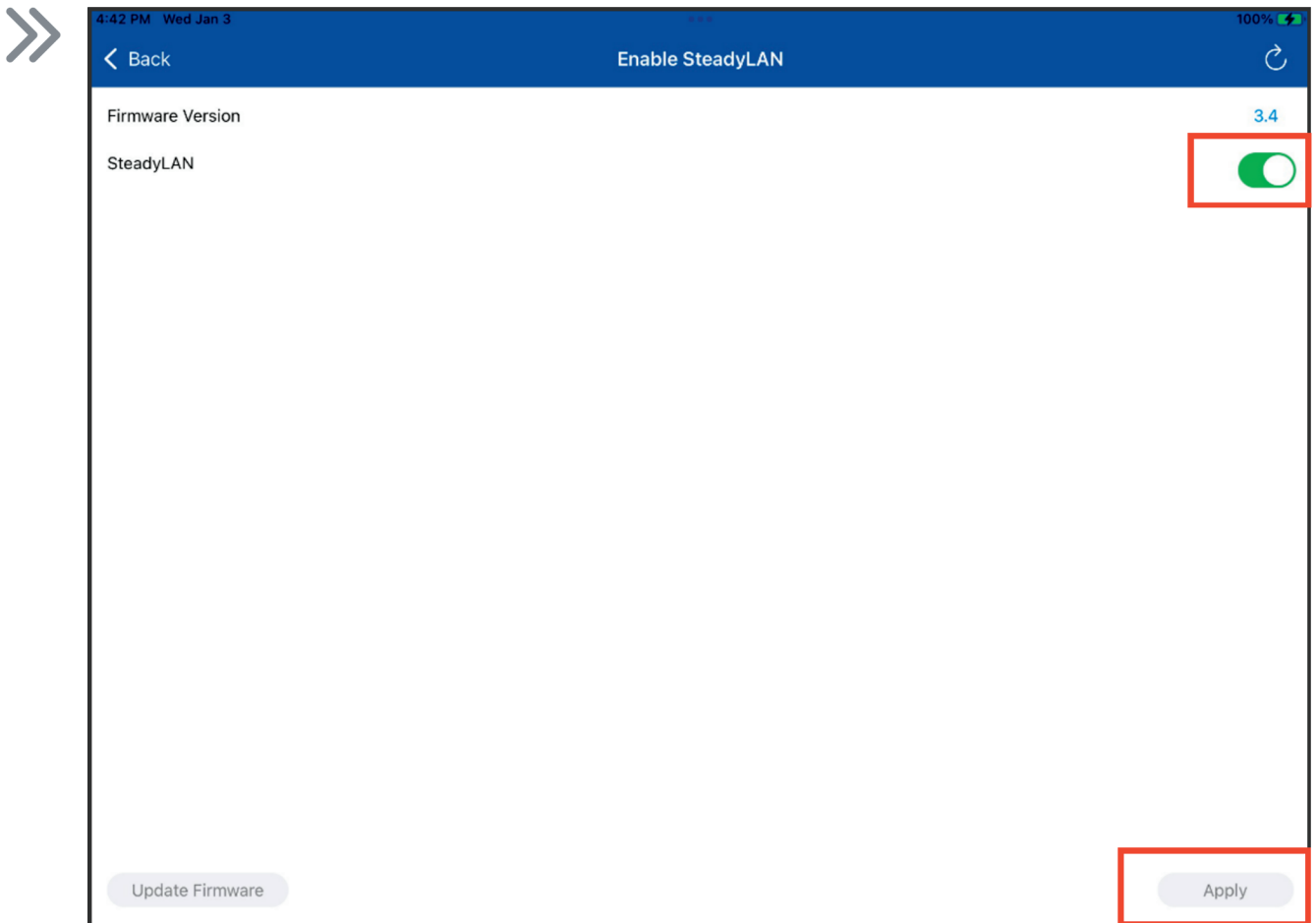
**36** Select Use Star SteadyLAN.



**37** Choose **Next** at the bottom until that button reads *Enable SteadyLAN*.  
Next, **select** Enable SteadyLAN.



**38** **Toggle** on SteadyLAN by **moving** the slider to green.  
Next, **select** Apply in the bottom right corner.



**39** If it says **success**, press the home button on the iPad and you are good to go.  
If it does **not**, please contact IT and we will troubleshoot the issue.