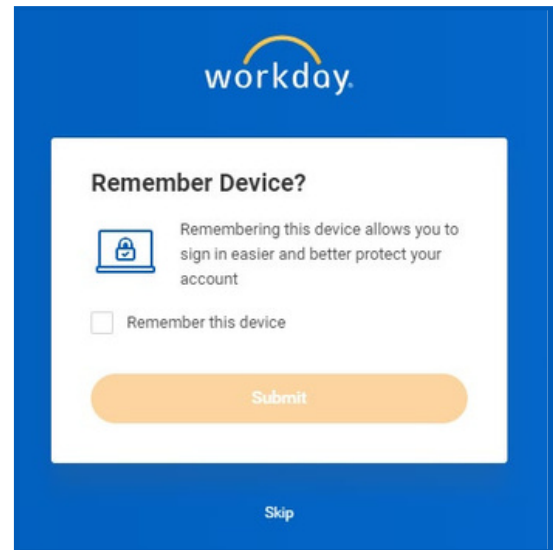


The Trusted Devices functionality improves tenant security by enabling users to easily identify sign-ins from trusted devices and unusual sign-in behavior from unknown browsers and devices. You can now explicitly trust devices at the time of sign in with this security feature.

SIGN IN

1. Enter your username and password.
2. Select **Sign In**. You have two options: remember the device or skip.
3. Select **Remember this device**.
4. Select **Submit**.

You will receive a security notification in your email. This notification explains that a sign-in attempt was made, including specific details such as the time, date, and device used.



The Trusted Device functionality considers the device as well as the browser. For example, say you sign in via Google Chrome on your laptop and make it a trusted device. Later, when you sign in via Firefox on the same laptop, Workday will prompt you to set it as a trusted device as well. Signing in via Google Chrome or Firefox on the same laptop shows up as two separate trusted devices.

MANAGE TRUSTED DEVICES

From the Home page:

1. Select your Profile photo.
2. Select **My Account**.
3. Select **Manage Trusted Devices**.
4. From here, select **Remove** to remove a device.



If you remove a device, Workday prompts you to either remember the device or skip the step on future sign-in attempts.

